



Barnstable Town Council

Update on Wastewater

Efforts In Barnstable

Department of Public Works
September 17, 2020



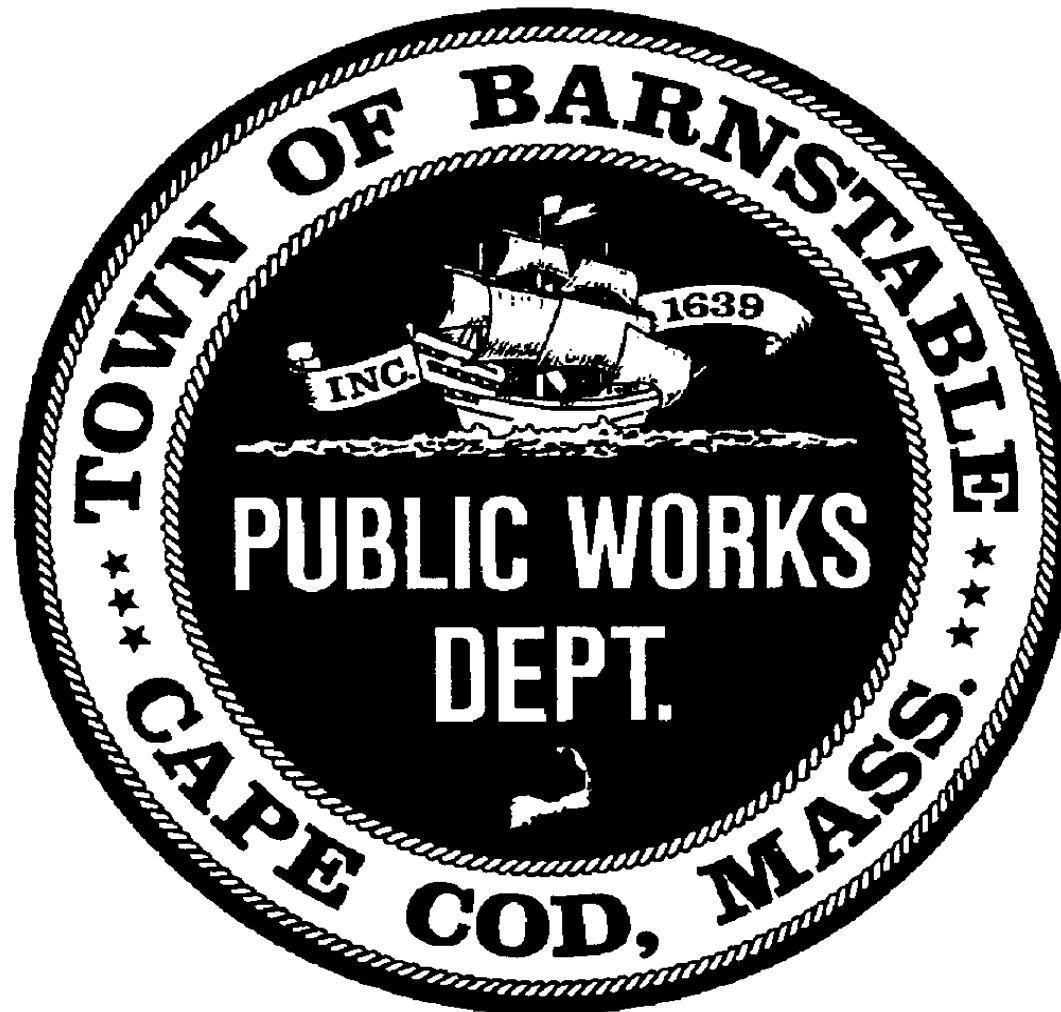
Update Since August

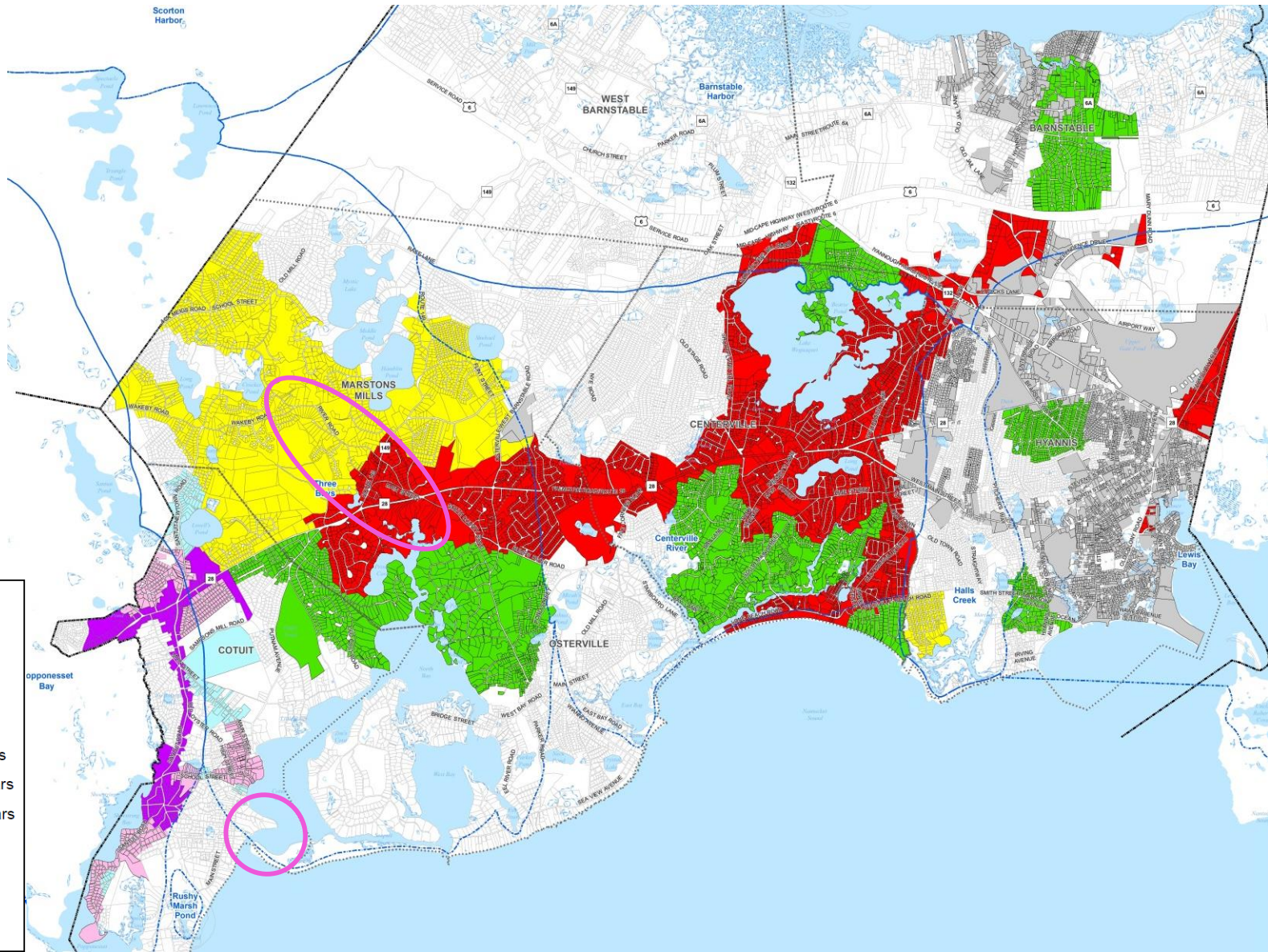


- *CWMP*
 - *Continue the Development of the Single EIR*
 - *Expected submission October 2020*
- *JBCC*
 - *No new information*
- *Mothers Park*
 - *Continuing to work on road ownership issues*
- *Projects*
 - *Rt 28 East (pump station & Sewering at Phinney's Lane and 28)*
 - *Preliminary Design continues*
 - *Boring work in Route 28 has begun*
 - *Winter 2021/22 Construction Start Target*
 - *Long Pond, Phinney Lane, and Rt 28 to Rt 149 survey commenced*
 - *Survey completion Target March 2021*
 - *Strawberry Hill Road Project*
 - *Continuing design and coordination with Vineyard Wind designers*



Discussion?





Legend

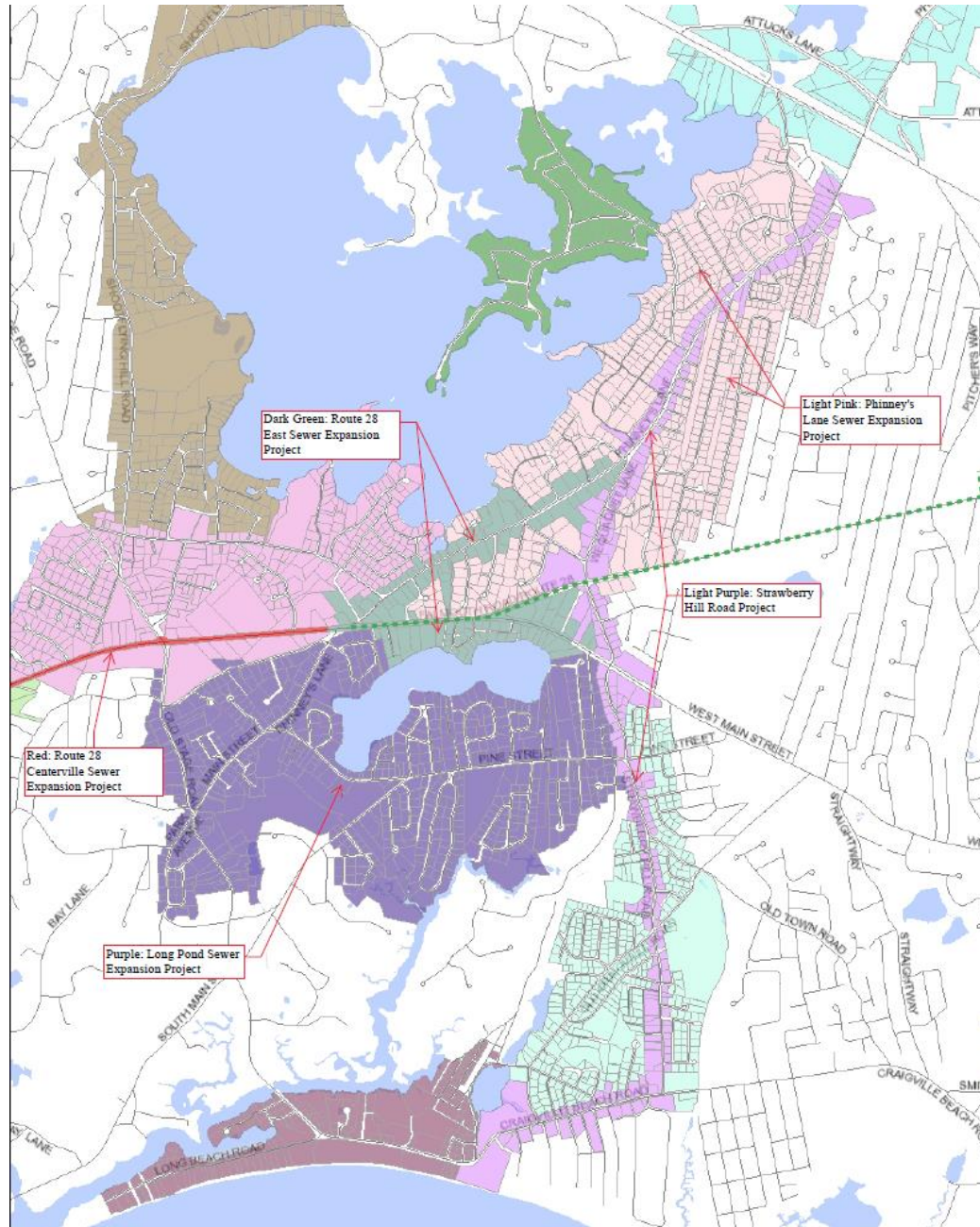
- District Villages
- Watersheds
- Parcels

Sewer Phasing

- Phase 1: 0-10 Years
- Phase 2: 11-20 Years
- Phase 3: 21-30 Years
- Stage 1
- Stage 2
- Stage 3
- Existing Sewer

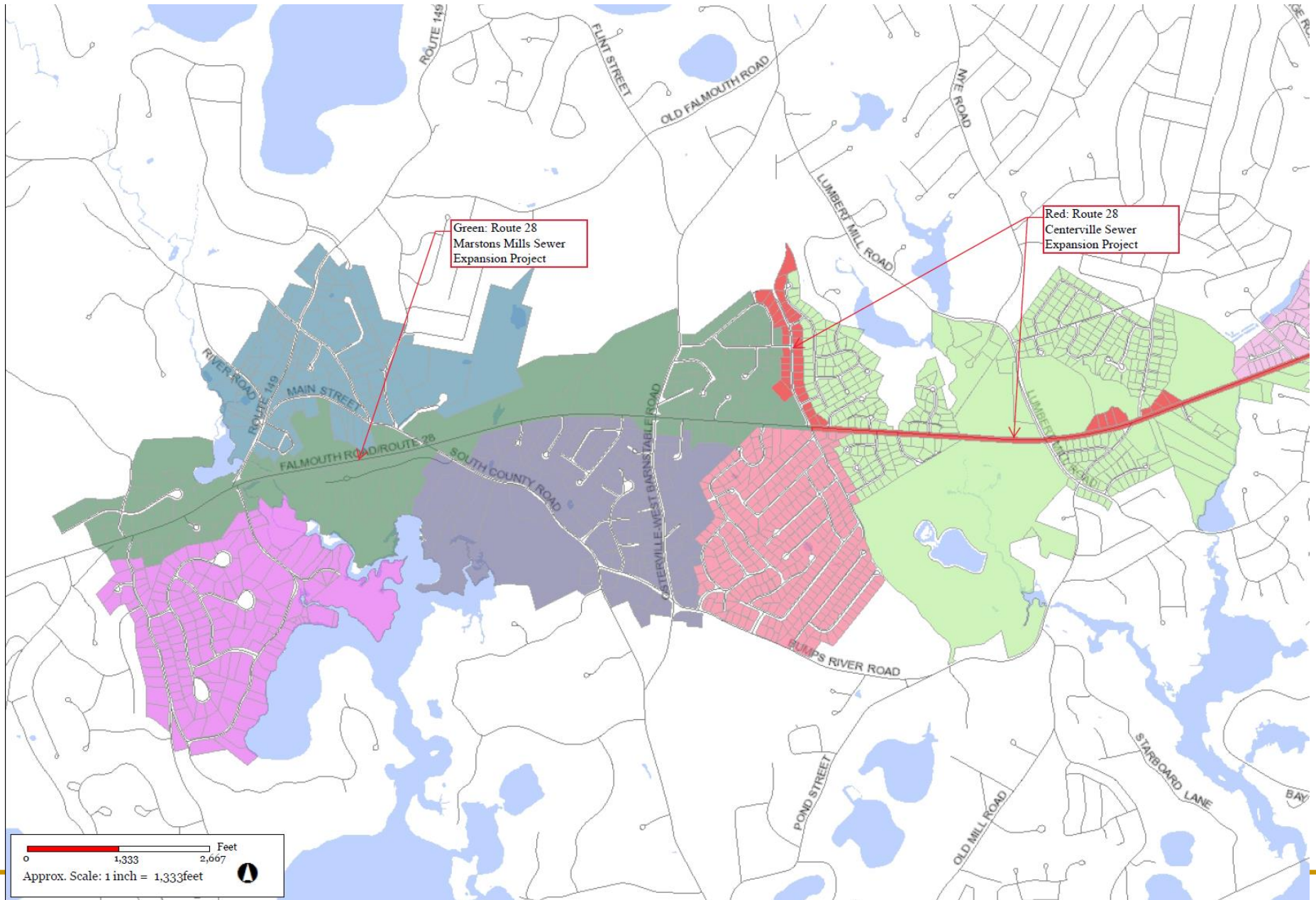
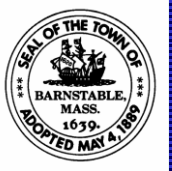


Phase I Projects - East





Phase I Projects - West





Projects Funded and Underway



- *Phinneys Lane Sewer Expansion*
 - *Conceptual Design \$315,000*
 - *Final Design \$735,000*
- *Long Pond Area Sewer Expansion*
 - *Conceptual Design \$402,000*
 - *Final Design \$938,000*
- *Attucks Lane Sewer Extension*
 - *Design \$100,000*
- *Cotuit Bay Channel Dredging*
 - *Phase I \$1,000,000*
 - *Phase II \$750,000*
- *Marstons Mills School Pump Station & Collection System*
 - *Conceptual Design \$612,000*



Projects Funded and Underway



- *Marstons Mills River Treatment System*
 - *Evaluation \$250,000*
 - *Design \$612,000*
- *WPCF Effluent Disposal Capacity Study*
 - *\$195,000*
- *WPCF Effluent Disposal Location Evaluation*
 - *\$150,000*
- *WPCF and Collection System Improvements*
 - *Biowin Modeling \$55,000*
 - *Clarifier Upgrades and Rehab \$2,289,505*
 - *Generator Upgrades \$904,000*
 - *Solids and Septage Receiving Building Improvements*
 - *Design \$450,000*
 - *Sewer Capacity Evaluation \$200,000*
 - *Pump Station Evaluation \$200,000*



Projects Funded and Underway



- *Joint Base Cape Cod WWTF and Effluent Disposal Analysis*
 - *\$250,000*
- *Cotuit and Western Marstons Mills Sewer*
 - *Conceptual Design \$250,000*
- *Vineyard Wind Associated Sewering*
 - *Design \$835,000*
 - *Construction \$8,500,000*
- *Municipal Separate Storm Sewer System (MS4) Program*
 - *Part 1 \$87,500*
 - *Part 2 \$150,000*
- *Route 28 and Yarmouth Road Associated Sewering*
 - *\$1,300,000*